

Artemis_Sitter v1.30

MT4 Expert Advisor

Copyright © 2005-2008, **Yannis Sferopoulos**

jsfero@otenet.gr

Yannis.21@gmail.com

You must read following acknowledgment and disclaimer very carefully and if you do not agree in full with the terms and conditions stated in both of them, **DO NOT PROCEED WITH THE INSTALLATION AND / OR THE USE OF THE EXPERT ADVISOR**. The use of the expert advisor explicitly indicates that you have read and agreed on all terms and conditions stated in the disclaimer and the acknowledgment below.

ACKNOWLEDGEMENT

Artemis_Sitter© is the property of the author, Yannis Sferopoulos. The expert advisor and any related software or related document is owned by the author and protected by copyright law and international copyright treaty. Therefore, you must treat both the software and the documentation like any other copyrighted material.

You are granted a non-exclusive license to use the software, but it may not be copied, rented, leased, diffused or transferred in any other way. You may not distribute, copy, emulate, clone, rent, lease, sell, modify, decompile, disassemble, or otherwise reverse engineer, or transfer the software, or any subset of it. All rights not expressly granted here are reserved by the owner.

Purchase or rental of this product does not transfer any right, title, or interest in the software. You are hereby notified that the software product is protected by EEC Copyright Law and you may be held responsible by the author for any infringement of such rights or violations of this agreement and will be prosecuted to the maximum extent possible under law. It is forbidden to distribute this software or the documentation, to third parties, including but not limited to, uploads to user groups, forums, shareware, eBay, and in general any web sites, without the explicit written authorization from the author.

DISCLAIMER

Any information herein and the use of the expert advisor should not be regarded by recipients as a substitute for the exercise of your own judgment. Any opinions expressed in this content are subject to change without notice and the author is not under any obligation to update or keep current the information contained herein.

Spot foreign currency transactions, options, derivative products and futures are not suitable for all investors, and trading in these instruments is considered very risky. Past performance is not necessarily indicative of future results.

Try the Artemis_Sitter expert advisor on a demo account first, until you fully understand how it works and verify by yourself that it works correctly and as you expect **BEFORE** putting any real money in it. An immense deal of work has been done to assure that all information supplied in this document and elsewhere is as accurate as it can be, and in the same time, the software including but not restricted to the expert advisors that can be provided as demo or registered version, is functioning correctly without problems and bugs.

However, the author, any of his representatives, associates or partners do not give any expressed or implied warranty as to its bug free operations or accuracy and will not accept any liability for errors, bugs, omissions or any other problems that could come up from the use of the software, and cannot and in any way, be held responsible for any damage, expenses, liability or losses that a user might sustain. Users are in fact advised of the possibility of such damages, losses, or expenses and of course, neither the EA nor the information contained herewith constitutes any solicitation or advice for trading.

Artemis_Sitter v1.30 EA



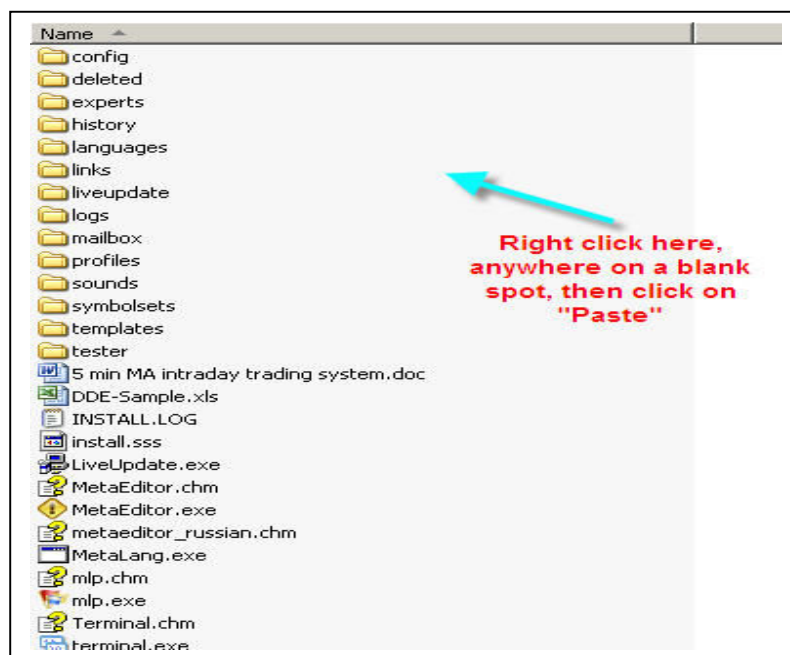
INSTALLATION NOTES

1. Close your MT4 instance
2. Unzip the file **Artemis Sitter.zip** to your desktop, you should see a new folder named **Artemis Sitter**. Double click to open this folder.
3. You should now see a folder named **Experts**, a file named **Artemis_Sitter.pdf**, a file named **Pop.exe** and a file named **popup.dll**.
 - Move the files **Pop.exe** and **Popup.dll** to your root C directory (C:\),
 - keep the file Artemis_Sitter.pdf wherever you want it is the user's guide.
 - Right click on the '**Experts**' folder, and click on '**Copy**'
4. In a windows explorer window, locate your actual MT4 folder, something like C:\Program Files\InterbankFX (or similar depending on your broker and where you initially installed your MT4 platform).
5. Open this MT4 main folder, you should see folders named **Config**, **Deleted**, **Experts**, **History**, **Languages**, **Links** etc.... and you should see files named **Metaeditor.exe**, **Terminal.exe** etc...

In a blank space anywhere in this window (careful to not click on any folder or on any file), right click and choose '**Paste**'

You will see a confirmation message telling you that there is already a folder named Experts and if you want to overwrite it, **simply say yes (or yes to all)**, don't worry, none of your files will be harmed or replaced.

Confirm any other message if any, this will place the EA and all the needed files in the right folders



6. Open your MT4 instance, you should see a new expert named Artemis_Sitter v1.30. It will be grayed out but it doesn't matter. This is because the source file is not provided, but the EA will function properly.
7. Put it on the chart(s) where you want it to babysit your trades; don't forget to set up the EA parameters to your own personal liking according to the way you trade.

What can Artemis_Sitter do for you?

1. Description

The EA is designed to be used **as an assisting tool** for manual trading, meaning **it will babysit and manage any open trade manually entered** and it will disregard any existing trade which might have been triggered by another EA as long as this other EA has used a Magic Number to differentiate its own trades. In short, Artemis_Sitter will handle any order that has no Magic Number (manual entries have none, or to put it better, their Magic Number equals 0).

Artemis_Sitter will do the following things once you put it / enable it on a chart where manual trades have been initiated:

- It will immediately set both a “masked” SL and TP far away from your real settings, hence disallowing the broker to actually ‘see’ your real stops and profit levels (but it will internally monitor your real settings and close position accordingly if needed), or it can simply set your real SL and TP if you choose to do so, according to your settings.
- It will automatically secure a position, moving the stop loss above or below (depending on the position) your entry price by any number of pips you wish to secure.
- It will trail a position, moving the SL according to the number of pips you wish to use as a trail.
- The trail can optionally start either from the beginning of the trade, or after the position has been secured (moved to break even) depending on your settings.
- You can optionally define any moving average to be used as a trail. For example you could use 50SMA as your trail, or any other MA since you can define both the period / length and the MA type (Simple, Exponential, Smoothed or Weighted)

- You can use multiple lot positions since Artemis_Sitter provides a scale out mechanism and up to 3 different TP levels. This means that it will automatically start to close portions of your initial lot size every time a TP level is reached.

- **Artemis Sitter provides a quick Stop & Reverse mechanism. You can reverse any trade in progress using a keyboard combination. The EA will close currently opened trades and initiate a new one in the opposite direction with the settings entered in the EA's inputs. This is done by pressing the key Alt (left side of the keyboard) + the key 'R' → **Alt+R****
If there's 1 trade active, pressing Alt+R will close this trade and open a new one in the opposite direction. If multiple trades are open, the EA will close them all and open a new one in the opposite direction only if all the open trades are in the same direction.

If the Use.PSAR.As.StopReverse parameter is set to true, the EA will do that automatically on any PSAR change of direction.

- There is also an automated Stop & Reverse mechanism based on the Parabolic Sar indicator. If you enable this feature, then once Artemis Sitter sees that PSar changes direction and its new direction is against your trade(s), it will close this trade(s) and initiate a new one in the direction of the indicator.
- It will also provide a multitude of visual onscreen information for many things amongst them, upcoming news showing you the impact of the news in corresponding color (red for very volatile, orange for medium), your trade's history flagged on the chart with the P&L for each one etc...

2. Settings

Lot.Size Any number of pips, but it should match your manual position lot size. You can use whatever lot size you want to trade with either full lots or fractional lots (mini or micro) depending on your broker. The value here will be use along with the "**Take.Out.Lots**" parameter below to allow the EA to eventually support scaling out positions (close partial values of the initial lot size by sizes defined by following parameter).

Take.Out.Lots any value (in pips) but it MUST BE AN EXACT DIVISOR of Lot.Size. The value here will be used by the expert advisor to partially close a multi lots position, each time it has to do so, which in turn depends on the various take profit levels below.

i.e. Lot.Size=1.30 → Take.Out.Lots=0.40 (3 x Take.Out.Lots exactly equals Lot.Size)
 Lot.Size=1.00 → Take.Out.Lots=0.50 (2 x Take.Out.Lots exactly equals Lot.Size)
 Lot.Size=1.00 → Take.Out.Lots=1.00 (1 x Take.Out.Lots exactly equals Lot.Size)
 Lot.Size=0.60 → Take.Out.Lots=0.60 (1 x Take.Out.Lots exactly equals Lot.Size)
 Wrong-> Lot.Size=1.20 → Take.Out.Lots=0.50 (2.4 x Take.Out.Lots = Lot.Size)

IT IS ESSENTIAL THESE 2 FIRST PARAMETERS ARE SET CORRECTLY

Actual.TP1 any value (in pips).

Actual.TP2 any value (in pips).

Actual.TP3 any value (in pips).

These are the 3 different profit targets you can optionally use with the expert. Each value is defined in pips from entry price, but you are not obliged in any way to use all 3 values. This depends on your initial **Lot.Size** and the **Take.Out.Lots** params and you can either use only TP1, TP1 and TP2 or all 3 TPs.

The Actual.TP1 is mandatory and cannot be 0.

The 2 others can be 0 or any number of pips, depending on how many "sub positions" you want your main trade to be broken in.

If your trade is to be handled as 1 position (Lot.Size = Take.Out.Lots) then both Actual.TP2 and Actual.TP3 MUST BE SET TO 0.

If your trade is to be handled as 2 positions (Lot.Size = 2 x Take.Out.Lots) then Actual.TP3 MUST BE SET TO 0.

Let's see some examples to make things clear. What is important to have in mind is that all the values used with these parameters must match. You **must** give Actual.TP2 a value other than 0 **IF** your **Take.out.Lots** value is **HALF** your **Lot.Size** (and keep TP3 to 0), and accordingly you **must** give a value other than 0 to **Actual.TP3** if your **Take.Out.Lots** is exactly at **1/3** than your **Lot.Size**

So here are some examples, with combinations for previous and current parameters depending on how you would like your trades to be handled. You can have the EA:

1. Babysit a position which will be fully closed **in one time**, at Actual.TP1 = at +15:
 - **Lot.Size** = **1.30**
 - **Take.Out.Lots** = **1.30** (=Lot.Size)
 - **Actual.TP1** = **15**
 - **Actual.TP2** = **0**
 - **Actual.TP3** = **0**

2. Open 1 Trade which will be handled in 2 steps ($\text{Lot.Size} = \text{Take.Out.Lots} \times 2$) and will be partially closed at 2 different times, one portion (0.60 lots) at +15 and remaining at +25 :

- **Lot.Size** = **1.20**
- **Take.Out.Lots** = **0.60** ($= \text{Lot.Size} / 2$)
- **Actual.TP1** = **15**
- **Actual.TP2** = **25**
- **Actual.TP3** = **0**

3. Open 1 Trade which will be handled in 3 steps ($\text{Lot.Size} = \text{Take.Out.Lots} \times 3$) and will be partially closed at 3 different times, one portion (0.40 lots) at +15, second portion (0.40 lots) at +25 and remaining at +50:

- **Lot.Size** = **1.50**
- **Take.Out.Lots** = **0.50** ($= \text{Lot.Size} / 3$)
- **Actual.TP1** = **15**
- **Actual.TP2** = **25**
- **Actual.TP3** = **50**

So you can consider **Take.Out.Lots** as the 'portion' of your trade you want to close at each **Actual.TP** level.

If the 'portion' of your trade is the same as Lot.Size, then your trade will be fully closed when the EA reaches the pips specified in Actual.TP1

You must set TP2 and TP3 to 0.

If the 'portion' is half your lot size, then 1/2 of your trade's lot size will be closed when / if EA reaches Actual.TP1 and the remaining half when / if Actual.TP2 is reached.

You must set TP3 to 0.

If the 'portion' is one third your lot size, then 1/3rd of your trade's lot size will be closed when / if EA reaches Actual.TP1, another 1/3rd when / if Actual.TP2 is reached and remaining 1/3rd when / if EA reaches Actual.TP3.

I hope the 'relation' between Lot.Size, Take.Out.Lots and the 3 Actual.TP levels is now clear, and you should know when to set a Actual.TP parameter to 0, or when to assign a specific value. If not then this is the 1st thing you have to clarify getting in touch with me as soon as possible.

Virtual.SL any value (in pips).

This is the SL that will be used to set up your manual trade stop loss (**if none is already specified**) so this is the stop loss the broker will 'see' but also the one that will be in play if your MT4 connection is lost.

The EA must be working in order to use its internal mechanism for monitoring the real SL and TP we have set so if your connection is stable you can use the masked SL (and TP) and let the EA do the rest. If you wish to disable this feature you can set it to 0, in which case the Actual.SL will be used and will update your manual entry.

Actual.SL any value (in pips).

This is the amount of pips which the expert will use as a real stop loss. It will internally monitor all your positions and if any one sustains a loss equal to the pips specified here, the EA will immediately close this position.

Virtual.TP any value (in pips).

This is the initial TP that will be used to set up your manual trade take profit (**if none is already specified**) so this is the TP the broker will 'see' but also the one that will be in play if your MT4 connection is lost. The EA must be working in order to use its internal mechanism for monitoring the real SL and TP we have set so if your connection is stable you can use the masked TP and let the EA do the rest. If you wish to disable this feature you can set it to 0.

Trail.Pips any value (in pips).

This is the amount of pips which the expert will use to trail a position. This means it will start moving your stop loss keeping it away from current price by the number of pips specified here as soon as it can but without ever going back even if price does come back.

This parameter is also combinable with all the

"Trail.Starts.After.BreakEven" parameters discussed below.

Trail.Starts.After.BreakEven True or False.

If true, the EA will start trailing a position (discussed with the "Trail.Pips" parameter previously) ONLY when and if, breakeven point is reached. Let's see an example to catch the difference between true and false here.

Assume following scenario. We have a long position opened at 1.9300, current price is at 1.9320 and we have set Trail.Pips=15 and Move.To.BreakEven.at.pips = 25.

If we set Trail.Starts.After.BreakEven to True, then the expert will not move the Stop Loss before price reaches 1.9325. This will happen because we ask the ea to move to breakeven at +25 pips ($1.9300 + 0.0025 = 1.9325$) so although our trail is set to 15 pips and we do have those 15 pips gain actually, the SL won't be moved yet.

On the other hand, if Trail.Starts.After.BreakEven is set to False, then as soon as price reaches 1.9315 ($1.9300 + 0.0015$ pips Trail), our trail will kick in, and from that point it will follow price pip by pip since in that case Move.To.BreakEven.at.pips will be ignored.

Move.To.BreakEven.at.pips any pip value. This is used to lock in a profit, when a trade is in profit by the number of pips specified here. Price must exceed Entry price by this number of pips in order to lock in the profit. How many pips will be locked is specified by the **"Move.To.BreakEven.lock.pips"** parameter below.

Move.To.BreakEven.Lock.pip any pip value. You specify here the amount of pips to lock once the amount of pips specified above by the **"Move.To.BreakEven.at.pips"** parameter is reached.

Trail.With.MA True / False. If set to True **and Trail.Pips is set to 0**, then the previous trail mechanism is overridden and the value of the moving average specified below will be used as a trail mechanism.

MA.Period The moving average period / length you wish to use. For example if you wish to trail your position using the 50 SMA moving average, you set this parameter to 50, if you wish to use 34 EMA, set it to 34 etc... (The type of the MA is not relevant here since it will be described below)

MA.Method We specify here the type of the moving average to be used. Here are the available types:
0 = Simple Moving Average
1 = Exponential Moving Average
2 = Smoothed Moving Average
3 = Linear Weighted Moving Average

So if we want to use a 50SMA as a trail, we set:

MA.Period = 50

MA.Method=0

Whereas if we want to set the trail at EMA34 level, we set:

MA.Period = 34

MA.Method=1

NOTE: The level of the MA is based on previous closed bar, not on the MA value of current bar.

Use.PSAR.As.StopReverse True / False.

If set to True the EA will monitor any switch in the Parabolic Sar indicator. When PSAR switches from its current direction to the opposite, if you have one (or more) trades opened in the opposite direction of the new direction indicated by the PSAR indicator then the EA will close them all and open a new one in PSAR's new direction with the settings set in the EA's inputs tab. You can set up the PSAR parameters (Time Frame to monitor and PSAR's parameters) on following inputs.

Psar.TimeFrame 0 for current, or any other TF
(5,15,30,60,240,1440)

PSAR.Step 0.02 (default) or any value you want

Psar.Maximum 0.2 (default) or any value you want

The remaining settings are pretty much explicit and are described in the image below



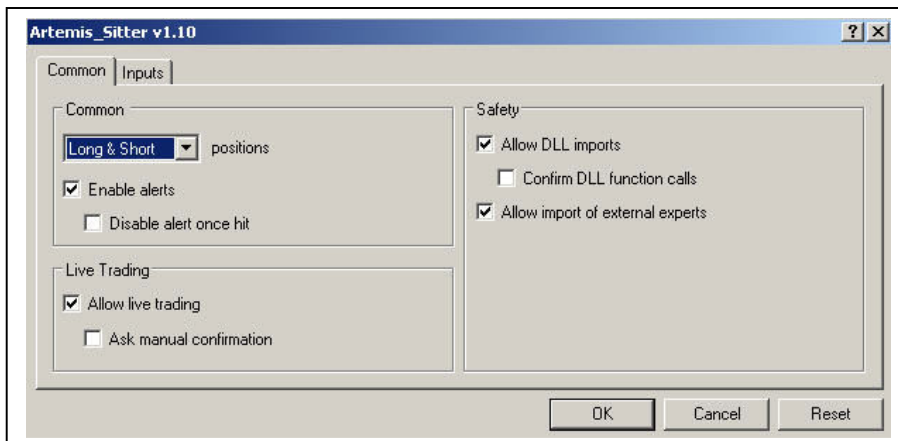
Error Codes and what they mean

9100 / 9103 - Your MT4 and/or EA check boxes are not correctly set

1. Press CTRL+O to open the MT4 Tools/Option window
2. Click on the 'Expert Advisors' tab page
3. Set your check boxes as picture below



4. Press F7 to open your Expert options window
5. Click on the "Common" tab
6. Set your check boxes as picture below



12100 - The expert is disabled

The **Lot.Size** and **Take.Out.Lots** parameters are not consistent with each other. This means that Lot.Size divided by Take.Out.Lots leaves a remainder or give a decimal value. Refer to page 5 of this user's guide for detailed explanations.

12101 - The expert is disabled

The Take Profit levels are not consistent with the ratio from **Lot.Size / Take.Out.Lots**. This means that Lot.Size divided by Take.Out.Lots gives for example a value of 3 (the trade will be scaled out in 3 steps) but you have specified less than 3 TP levels. Or the ratio is 2 ($\text{Lot.Size} / \text{Take.Out.Lots} = 2$) but you have specified a value for TP3 which must be set to 0. Refer to page 6 of this user's guide for detailed explanations.